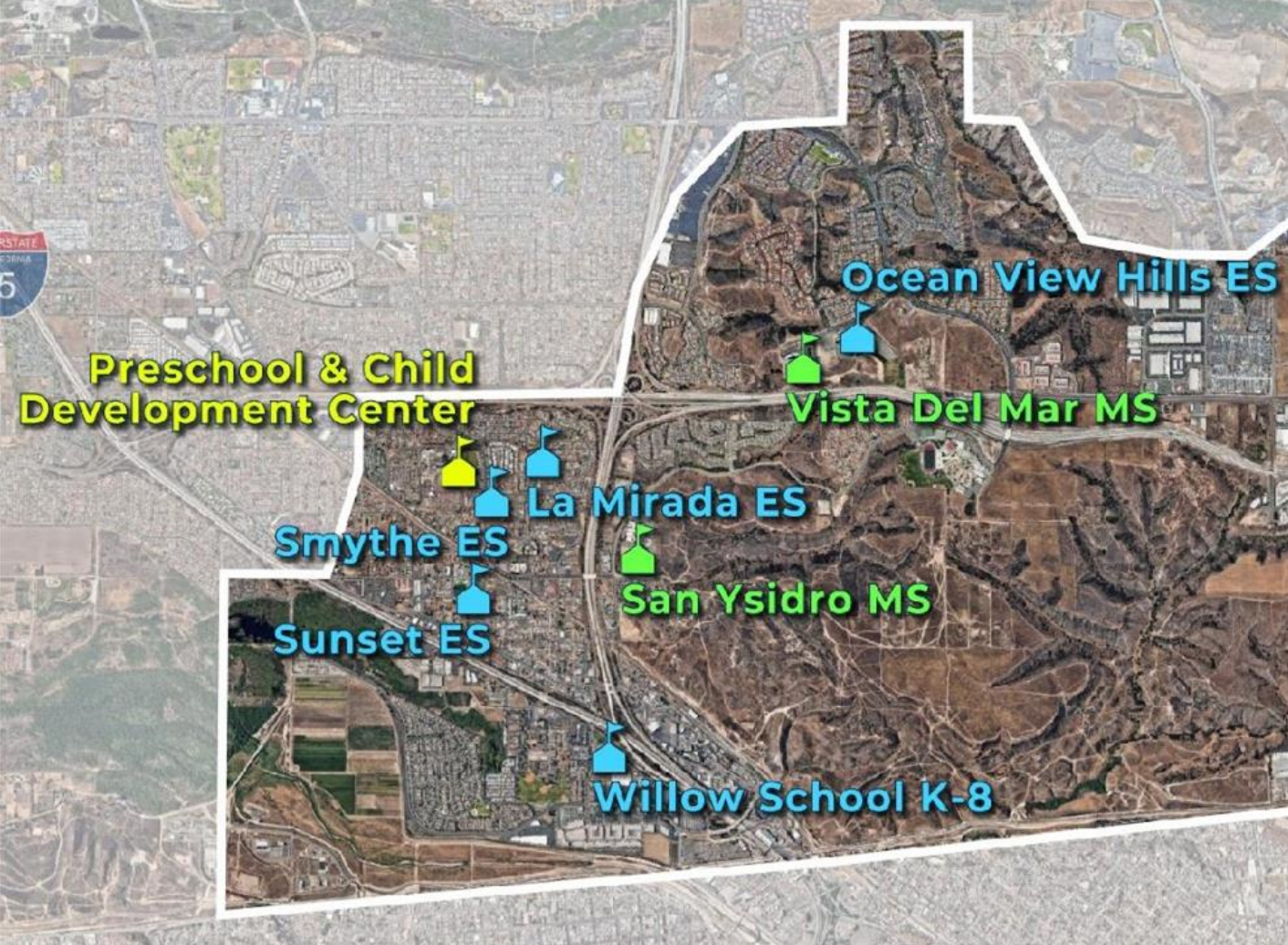


FACILITY MASTERPLANNING



San Ysidro
School District EST - 1887
QUALITY EDUCATION AND OPPORTUNITY FOR ALL STUDENTS TO SUCCEED

FACILITY MASTERPLANNING



San Ysidro

School District EST - 1887

QUALITY EDUCATION AND OPPORTUNITY FOR ALL STUDENTS TO SUCCEED

FACILITY MASTERPLANNING

PROCESS (Information and Input Gathering):

SEEKING INPUT FROM THE STAKEHOLDERS

- San Ysidro School District
- Individual School Sites
- Community Groups (Neighbors / PTA)
- Students
- Governmental Agencies



San Ysidro
School District **EST - 1887**
QUALITY EDUCATION AND OPPORTUNITY FOR ALL STUDENTS TO SUCCEED

FACILITY MASTERPLANNING

The Known Universe of Facilities Challenges:

- **S:** Security
- **T:** Technology
- **E:** Evolution
- **M:** Maintenance
- **P:** Parity
- **S:** Sustainability



FACILITY MASTERPLANNING

The Known Universe of Facilities Remedies:

- **Build** Something New
- **Renovate** Something Old
- **Improve** the Site / Grounds
- **Upgrade** the Furniture, Technology, and Equipment



San Ysidro
School District EST - 1887
QUALITY EDUCATION AND OPPORTUNITY FOR ALL STUDENTS TO SUCCEED

La Mirada Elementary School



San Ysidro
School District EST - 1887
QUALITY EDUCATION AND OPPORTUNITY FOR ALL STUDENTS TO SUCCEED

La Mirada Elementary School

Principal's Input:

- **Building Something New**

Permanent building to replace remaining portables
New Main Office Secure Entry Foyer to create a single point of entry

- **Renovate Something Old**

Nothing noted

- **Improve the Site / Grounds**

Replace playground equipment and safety surfacing
Complete east parking lot with curbs and lighting
Either maintain, or remove garden by east parking lot
Repair flooding condition along street frontage

- **Furniture, Technology, Equipment**

Nothing noted



Smythe Elementary School



San Ysidro
School District **EST - 1887**
QUALITY EDUCATION AND OPPORTUNITY FOR ALL STUDENTS TO SUCCEED

Smythe Elementary School

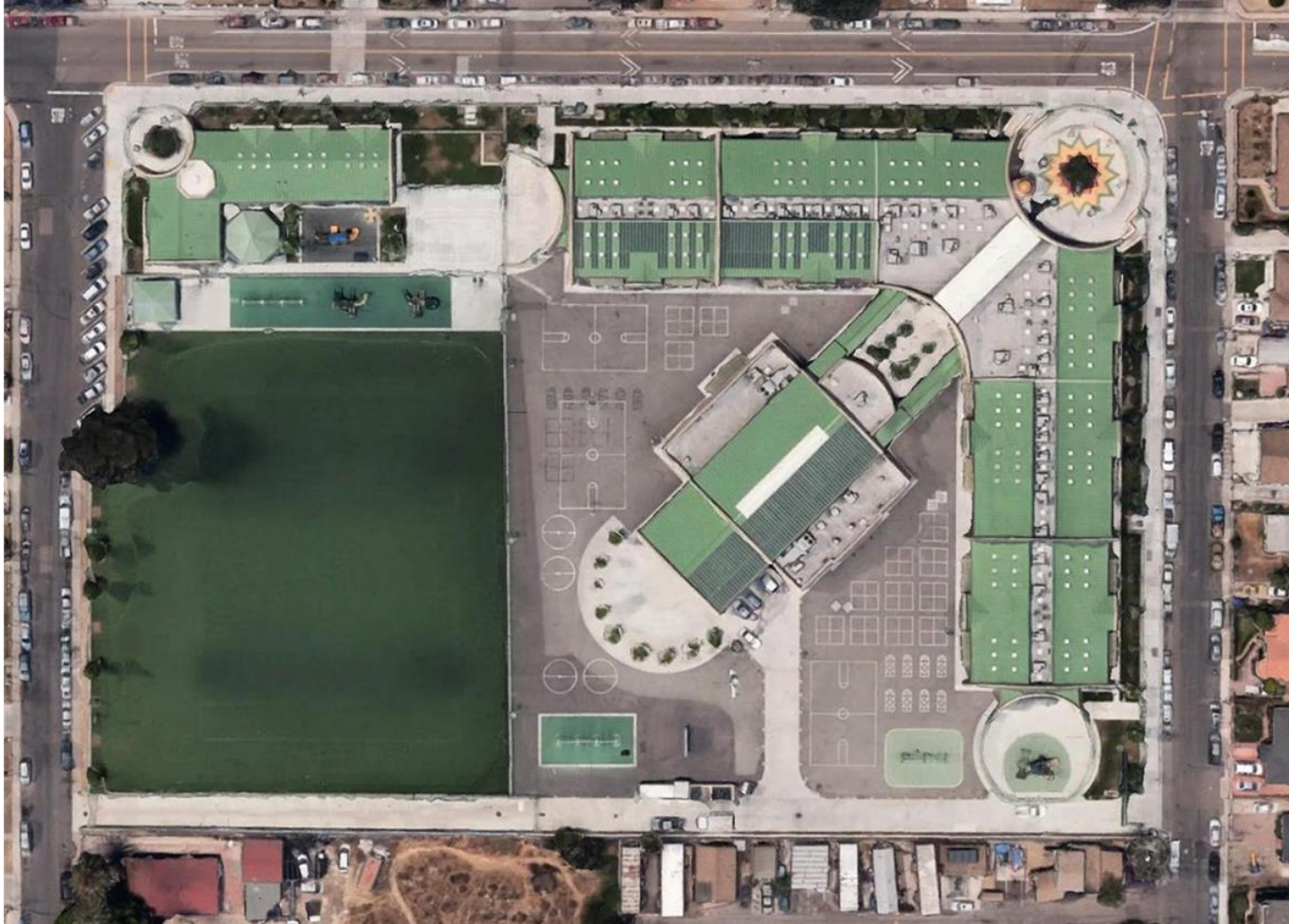
Principal's Input:

- **Building Something New**
New Main Office Secure Entry Foyer to create a single point of entry
- **Renovate Something Old**
Nothing noted
- **Improve the Site / Grounds**
Replace playground equipment and safety surfacing
Complete east parking lot with curbs and lighting
- **Furniture, Technology, Equipment**
Nothing noted



San Ysidro
School District **EST - 1887**
QUALITY EDUCATION AND OPPORTUNITY FOR ALL STUDENTS TO SUCCEED

Sunset Elementary School



San Ysidro
School District **EST - 1887**
QUALITY EDUCATION AND OPPORTUNITY FOR ALL STUDENTS TO SUCCEED

Sunset Elementary School

Principal's Input:

- **Building Something New**

Nothing noted

- **Renovate Something Old**

Dedicated Main Office Secure Entry Foyer to create a single point of entry

Consider re-purposing classroom small group spaces to provide more storage

CDC: Secure entry foyer

CDC: Add child-level tack-able surfaces in classrooms

- **Improve the Site / Grounds**

Consider adding an on site drop off lane and parking lot

Complete north, off-site parking lot with curbs and lighting

CDC: reconstruct fence separating CDC playground from ES playground

CDC: construct instructional garden area

Furniture, Technology, Equipment

Nothing noted



Willow Elementary School



San Ysidro
School District **EST - 1887**
QUALITY EDUCATION AND OPPORTUNITY FOR ALL STUDENTS TO SUCCEED

Willow Elementary School

Principal's Input:

- **Building Something New**
New Student Restroom adjacent and accessible to playground
- **Renovate Something Old**
Nothing noted
- **Improve the Site / Grounds**
Supplement fencing along freeway frontage and Willow Road
Add fencing to parking lot retention basin
Consider new uses for educational gardens (difficult to keep up)
- **Furniture, Technology, Equipment**
Nothing noted



San Ysidro
School District **EST - 1887**
QUALITY EDUCATION AND OPPORTUNITY FOR ALL STUDENTS TO SUCCEED

Ocean View Hills Elementary School



San Ysidro
School District **EST - 1887**
QUALITY EDUCATION AND OPPORTUNITY FOR ALL STUDENTS TO SUCCEED

Ocean View Hills Elementary School

Principal's Input:

- **Building Something New**

Permanent building to replace remaining portables
New Parent/Volunteer Center

- **Renovate Something Old**

Replace MPR carpet with a resilient multi-purpose product

- **Improve the Site / Grounds**

Replace playground equipment and safety surfacing
Securable gate at east service drive
Re-establish courtyard landscaping, with new trees, planting or other solution
Consider security screening at open playground (additional ball walls, etc.)

- **Furniture, Technology, Equipment**

Nothing noted



Vista Del Mar School



San Ysidro
School District **EST - 1887**
QUALITY EDUCATION AND OPPORTUNITY FOR ALL STUDENTS TO SUCCEED

Vista Del Mar School

Principal's Input:

- **Building Something New**

Construct a permanent wing to replace portable PE Locker Rooms

Add overhangs to second floor classroom wings and from the MPR to the Lunch Canopy

- **Renovate Something Old**

Remodel Kindergarten spaces into proper Middle School science and electives

Enhance Main Office Secure Entry Foyer to create a single point of entry

Rethink location and design of ASB Room

- **Improve the Site / Grounds**

Remove the original elementary school play equipment

- **Furniture, Technology, Equipment**

Main Office copy machine location/upgrade



San Ysidro Middle School



San Ysidro
School District **EST - 1887**
QUALITY EDUCATION AND OPPORTUNITY FOR ALL STUDENTS TO SUCCEED

San Ysidro Middle School

Principal's Input:

- **Building Something New**

Repurpose the old 'cafeteria' shelter

New Main Office Secure Entry Foyer to create a single point of entry

- **Renovate Something Old**

Interior renovation/modernization of the entire campus

Special attention to PE Locker Rooms and Library

Paint exterior to create a new fresh, aesthetic considering school colors

- **Improve the Site / Grounds**

Replant PE playfield

Replace uneven plaza pavement

- **Furniture, Technology, Equipment**

New flexible furniture



SYSD Child Development Center



San Ysidro
School District **EST - 1887**
QUALITY EDUCATION AND OPPORTUNITY FOR ALL STUDENTS TO SUCCEED

SYSD Child Development Center

Principal's Input:

- **Building Something New**

Reconstruct or relocate entire campus into permanent location (La Mirada? Beyer?)

Add space for Staff Offices/Workrooms

- **Renovate Something Old**

Provide easy to clean surfaces (flooring, walls, etc.)

Provide operable connecting classroom for flexible enrollment and instruction

New Main Office Secure Entry Foyer to create a single point of entry

Provide more outdoor play equipment storage

- **Improve the Site / Grounds**

Elongate drop off lane

Additional parking needed during drop off and dismissal

Security needed at gates to Smythe ES

More variety of playground surfaces needed

Replace/install rubberized play surface outdoor play equipment

Construct instructional garden area

- **Furniture, Technology, Equipment**

Notes



San Ysidro

School District **EST - 1887**

QUALITY EDUCATION AND OPPORTUNITY FOR ALL STUDENTS TO SUCCEED

Bever Site



San Ysidro
School District **EST - 1887**
QUALITY EDUCATION AND OPPORTUNITY FOR ALL STUDENTS TO SUCCEED

Beyer Site

SYSD Input:

- **Building Something New**

District/Community Input

- **Renovate Something Old**

District/Community Input

- **Improve the Site / Grounds**

District/Community Input

- **Furniture, Technology, Equipment**

District/Community Input



San Ysidro
School District **EST - 1887**
QUALITY EDUCATION AND OPPORTUNITY FOR ALL STUDENTS TO SUCCEED

Master Plan Project Summary Matrix:

School Site:	New Construction	Renovation	Site Improvements	Furnish/Tech/Safety
La Mirada ES	No	No	Playground	Entry/Access
Smythe ES	No	No	Playground	Entry/Access
San Ysidro MS	No	Entire Campus	Lunch Court	Furnish/Access
Sunset ES	No	No	Playground	Furnish/Access
Willow ES	No	No	Playground	Access
Ocean View Hills ES	New Wing	No	Playground	Access
Vista Del Mar K8	New Wing	Kinder Wing	Playground	Access
CDC	New Campus	Entire Campus	Entire Campus	Entire Campus
Beyer	Re-Purpose	N/A	N/A	N/A





CLIENT FOCUSED.
PASSION DRIVEN.